

Dimensions & Info

GREAT ROOM	15.5' x 14.5'
EAT-IN KITCHEN	16.83' x 11.25'
DINING ROOM	12.83' x 9.67'
4 PIECE ENSUITE	8.33' x 5.58'
4 PIECE BATHROOM	8.33' x 6.83'
3 PIECE BATHROOM (LL)	12' x 6'
PRIMARY BEDROOM	12.5' x 12.5'
BEDROOM #2	12' x 10'
BEDROOM #3	12.17' x 10'
BEDROOM #4 (LL)	16.67' x 12'
RECREATION ROOM	22' x 21.25'
GAME ROOM	22' x 15'



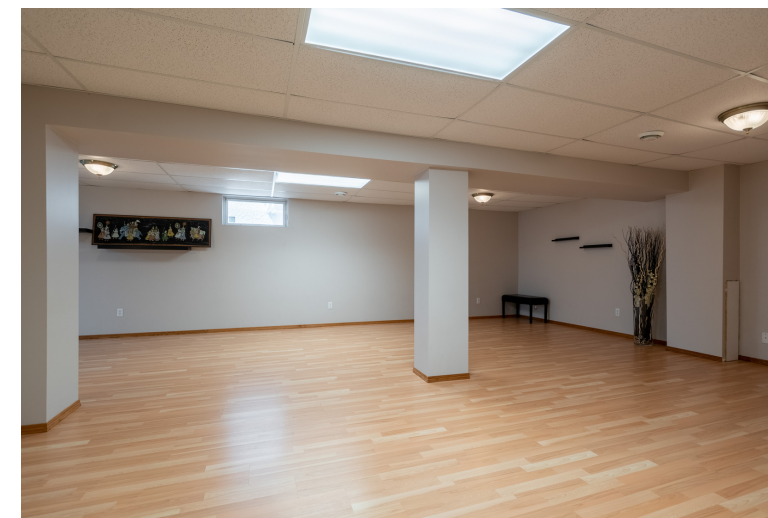
20 Settingington Bay

Danielle Margolis
(204) 791-9719



Jon Margolis
(204) 955-9055





Welcome to Whyte Ridge

This beautiful Sterling built Medina home is nestled on a quiet bay. The open concept plan has gorgeous vaulted ceilings and plenty of windows making this home bright and airy.

The kitchen is the heart of the home and this one has plenty of storage, counter space, tasteful back splash and a corner walk-in pantry.

The cozy eat-in area as a garden door that leads to the covered deck and back yard. While the formal dining room is at the front of the home with lots of space for a large family dinner.

The lower level has two huge recreation spaces - tons of ways to set up! Plus a fourth bedroom and full bathroom. Perfect for out of town guests!

Fenced south facing backyard with a patio to enjoy al fresco dining during the warm months.

\$534,900

 1,582 sf  3+1  3



margolis.ca
(204) 791-9719

3-1450 Corydon Ave
Winnipeg, MB
R3N 0J3

  @margolisgroup

THE
M A R G O L I S
GROUP

ROYAL LEPAGE
Dynamic Real Estate
INDEPENDENTLY OWNED AND OPERATED

Special Mention

Schools:
Whyte Ridge Elementary School
McGillivray Montessori School

Shopping:
Kenaston Shops
IKEA

Parks:
Fort Whyte Alive
Whyte Ridge Community Center
Scurfield Park